

Ansell is a world leader in providing superior health and safety protection solutions that enhance human well-being. The world's need for better protection never stops, so Ansell is constantly researching, developing and investing to manufacture and distribute cutting edge product innovation and technology, marketed under well-known brands that customers trust. Operating in two main business segments, Industrial and Healthcare, Ansell is the market leader that continues to grow, employing 12,000 people worldwide. With operations in North America, Latin America/ Caribbean, EMEA and Asia Pacific, customers in more than 100 countries around the world trust Ansell and its protection solutions. #AnsellProtects

FINANCIAL HIGHLIGHTS

	Sales \$1,489.8m 8.4% Reported & 5.1% CC ²
	Adjusted¹ EPS 102.0¢ 25.9% Reported & 18% CC ²
	Adjusted¹ ROCE% 12.9% Up 60bps
	Adjusted¹ EBIT \$193.1m 8.6% Growth & 4.9% CC ²
	Dividend 45.5¢ 15 th Year of Increase
	Leverage Ratio \$28m/(0.12)x Net Cash Position
	Adjusted¹ Profit Attributable \$146.7m 22.8% Reported & 15.2% CC ²
	Operating Cash Flow \$93.6m Lower on SW Divestment & Transformation
	Share Buybacks³ \$96m 5.4m Shares Acquired

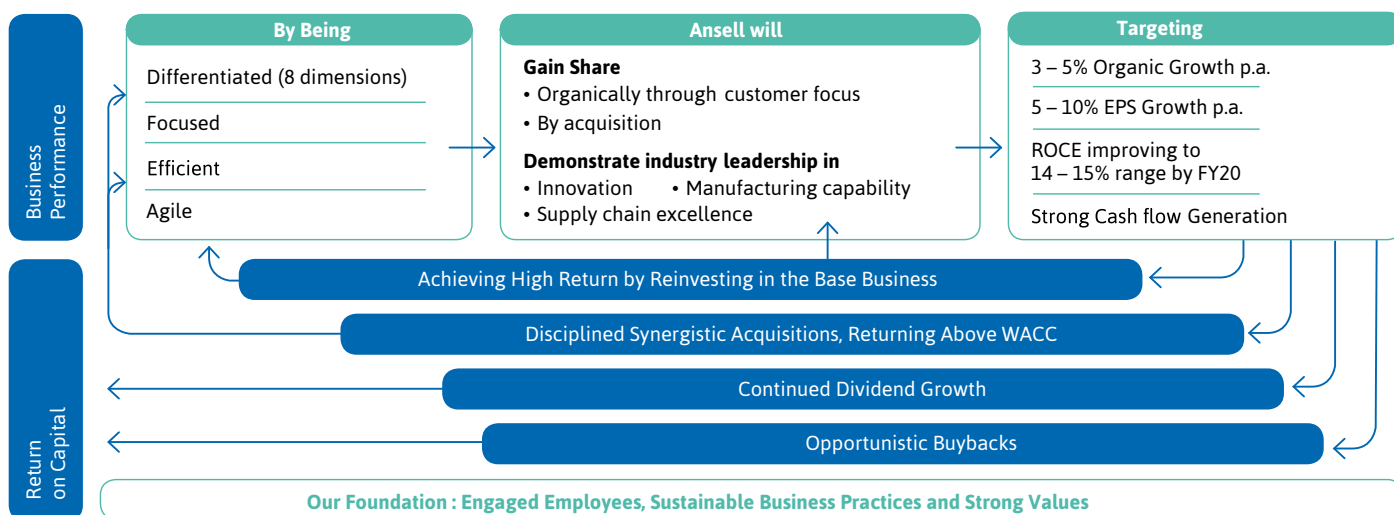
STRATEGY



- Adjusted to exclude transformation costs, impact of change to useful life on development costs to generally expense as incurred and revaluation of deferred tax balances on tax rate changes (primarily US)
- Constant Currency compares F'18 to F'17 results restated at F'18 average FX rates & excludes the value of FX gains or losses in both periods
- Total figures under buyback program. During F'18 alone, 5.2m shares acquired for \$92.3m

Ansell's focus on organic growth, efficient manufacturing, innovation, smart use of capital and strategic acquisitions has positioned us to outperform, outgrow and outlast our competitors. We believe we are uniquely well positioned to succeed long term and add sustainable value to our customers through our **Eight Dimensions of Differentiation**.

SHAREHOLDER VALUE CREATION MODEL

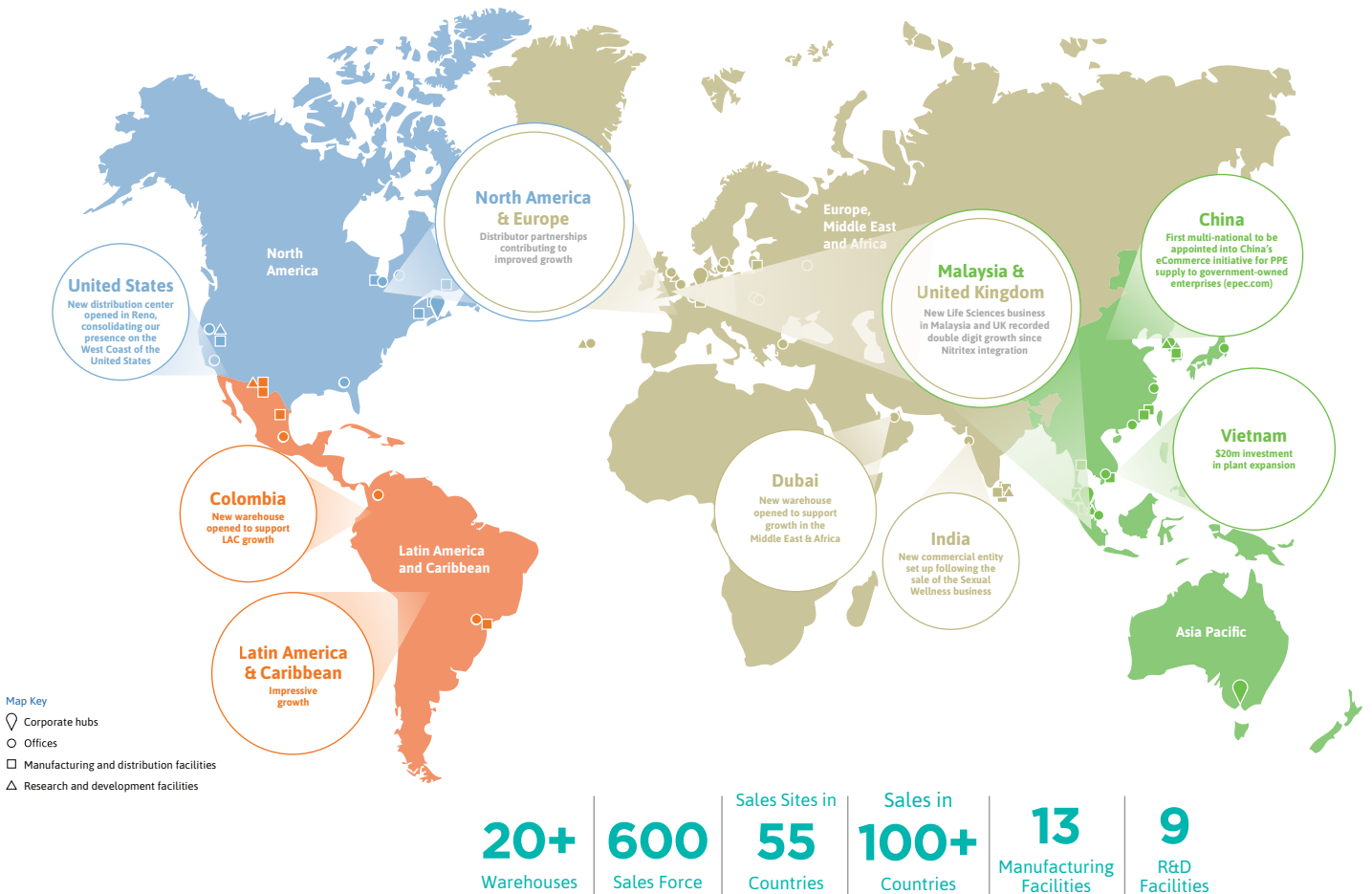


GLOBAL BUSINESS UNIT OVERVIEW

INDUSTRIAL			HEALTHCARE		
48% of total sales	\$716M Revenue	12%* EBIT Margin	52% of total sales	\$774M Revenue	16%* EBIT Margin
INDUSTRIAL BUSINESS UNIT PERFORMANCE			HEALTHCARE BUSINESS UNIT PERFORMANCE		
AlphaTec [®] 58-735 +17% Growth	HyFlex [®] 11-542 +9% Growth	EDGE [®] 48-205 +46% Growth	GAMMEX [®] Glove-In-Glove [™] System +6% Growth	MICROFLEX [®] LifeStar [™] EC +4% Growth	TouchNTuff [®] 92-600 +9% Growth
HyFlex [®]	AlphaTec [®]	ACTIV/ARMR	AlphaTec [®] Solvex [®]	EDGE [®]	MICROGARD [®]
			GAMMEX [®]	MICROFLEX [®]	TouchNTuff [®]
				SANDELL [®]	ENCORE [®]
					BioClean [®]

*F18 continuing Adjusted EBIT margin excludes transformation costs and impact of change to useful life on development costs to generally expense as incurred.

ANSELL WORLDWIDE



CORPORATE SOCIAL RESPONSIBILITY & SUSTAINABILITY

Ansell is committed to leading by example in responsible practices in human rights, community, environment and governance. We have been actively working in these areas for several years to consume less energy, water and space per unit of output, support the communities we live and work in and ensure ethical behavior and a safety culture are top of mind for our diverse workforce.



Human Rights

Operating in accordance with Universal Declaration of Human Rights.

Health & Safety

Committed to protecting all workers in an 'Ansell protected' world.

Community

Helping people in need by partnering with non-profit organizations.

Environment

Improving environmental performance to advance our sustainability vision.

CORPORATE OFFICES

Registered Office

Level 3
678 Victoria Street
Richmond VIC 3121, Australia

T + 61 3 9270 7270
F + 61 3 9270 7300

Americas Commercial Hub

111 Wood Avenue, Suite 210
Iselin, NJ 08830
United States of America

T + 1 732 345 5400
F + 1 732 219 5114

EMEA/APAC Commercial Hub

Boulevard International 55
1070 Anderlecht
Belgium

T + 32 (0)2 528 74 00
F + 32 (0)2 528 74 01

Cyberjaya Commercial Hub

Prima 6, Prima Avenue
Block 3512, Jalan Teknokrat 6
63000 Cyberjaya, Malaysia

T +603 8310 6688
F +603 8318 6699