

## Zero Waste to Landfill - FAQs

### 1. What is our Zero-Waste Journey?

Our Zero-Waste Journey started when we set an ambitious goal to achieve 'Zero Waste to Landfill by 2023' for all our plants in December 2019. The target is an integral part of our journey to review waste management and generation, operational efficiency and manage the 'end-of-life solutions' of the materials and inputs we use in our manufacturing processes.

### 2. How is it consistent with our values?

At Ansell, we protect people and the planet. Our Zero Waste to Landfill target is aligned with two of the 17 United Nations Sustainable Development Goals (SDGs), namely the 12th SDG "Responsible Consumption and Production" and the 13th SDG "Climate Action".

### 3. What has been done since the start of our Zero Waste journey?

To date, Ansell has successfully diverted 96% of the waste generated at our manufacturing facilities from landfills. Seven plants are successfully certified by Intertek as Zero Waste to Landfill\*, including two plants recently certified.

We are proud of our achievements to date and are currently in the final stages of our Zero-Waste Journey, which is supported by the 5R principles (refuse, reduce, reuse, repurpose, and then recycle), innovative thinking and the ambition of our people.

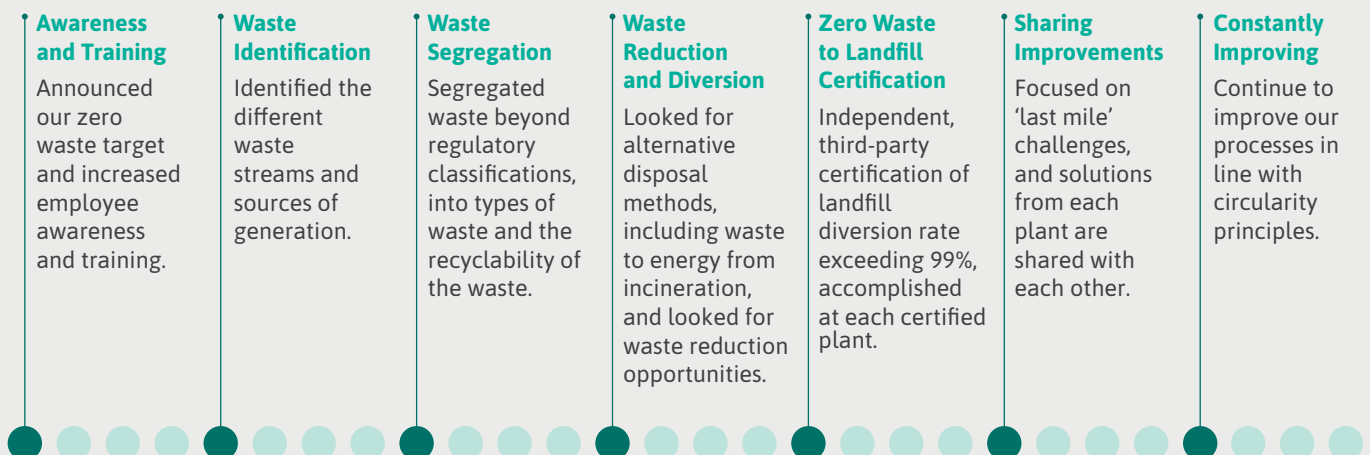
**\*Intertek certification:** Intertek is an independent third party that certified each plant's waste to landfill diversion rate\* exceeding 99%, against Intertek's Zero Waste to Landfill certification criteria.

### 4. What are the "Zero Waste Journey" goals for FY23?

By FY23, all plants will be certified as Zero Waste to Landfill, a milestone achievement in our environmental stewardship commitments and strategies.

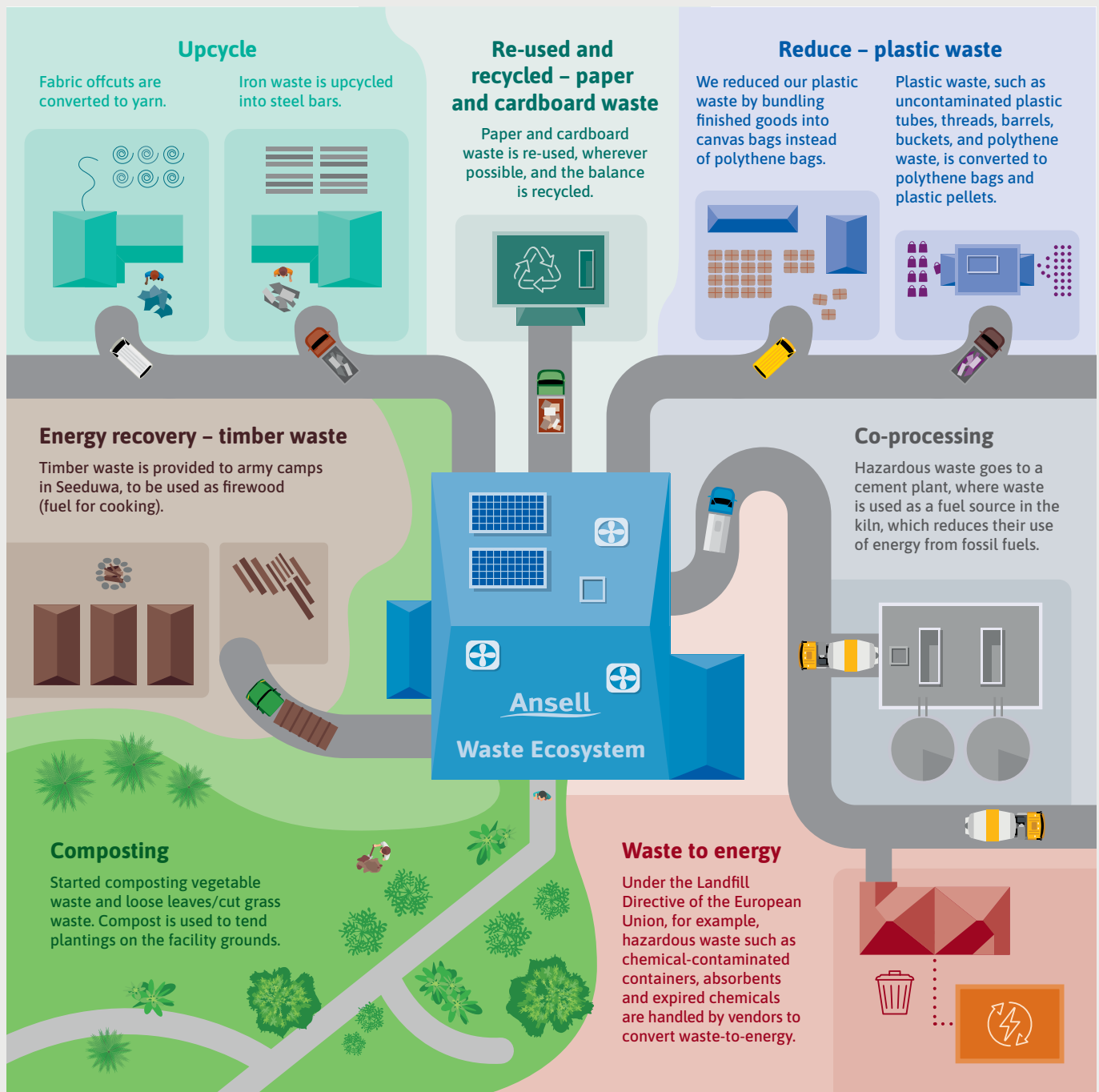
### 5. What are the steps of our "Zero Waste to Landfill Journey"?

The road to achieving this target is unique to each plant:



## 6. What does our current waste ecosystem look like, consolidated across the plants?

Different categories of waste generated and the availability of waste management vendors capable of handling different waste streams required us to segregate our waste in new ways. This resulted in an ecosystem of waste management and waste disposal destinations that is unique to each plant. The diagram below illustrates and consolidates disposal methods from all the plants:



# Ansell Protects™

## Protecting people, in every respect.

For over 125 years, Ansell has been protecting people, and our ambitions today are stronger than ever. By setting ourselves ambitious goals on protecting our environment, we seek to break new ground. With increased sustainability and ever smarter, more connected PPE, we strive to ensure the safety of workers and the environment we live in.

**Thinking of people and planet first.**

Learn more at [ansell.com/sustainability](https://ansell.com/sustainability)

Ansell, ® and ™ are trademarks owned by Ansell Limited or one of its affiliates, except as noted. © 2023 Ansell Limited. All Rights Reserved.