

## Zero Waste to Landfill - FAQs

### 1. What is our Zero-Waste Journey?

Our Zero-Waste Journey started when we set an ambitious goal to achieve 'Zero Waste to Landfill by 2023' for all our plants in December 2019. This journey is supported by the 5R principles (refuse, reduce, reuse, repurpose, and then recycle), innovative thinking and the ambition of our people.

The target is an integral part of our journey to review waste management and generation, operational efficiency and manage the 'end-of-life solutions' of the materials and inputs we use in our manufacturing processes.

### 2. How is it consistent with our values?

At Ansell, we protect people and the planet. Our Zero Waste to Landfill target is aligned with two of the 17 United Nations Sustainable Development Goals (SDGs), namely the 12th SDG "Responsible Consumption and Production" and the 13th SDG "Climate Action".

### 3. What has been done since the start of our Zero Waste Journey?

FY23 was the 'last mile' of our journey to achieve Zero Waste to Landfill by 2023. Ansell's manufacturing plants implemented the technical knowledge they have accumulated since we embarked on this goal to address their final waste streams in collaboration with specialised waste management vendors.

To date, Intertek\* has certified all plants as Zero Waste to Landfill. Our new plants in Kovai, India and Seremban, Malaysia will need to begin their journey to zero.

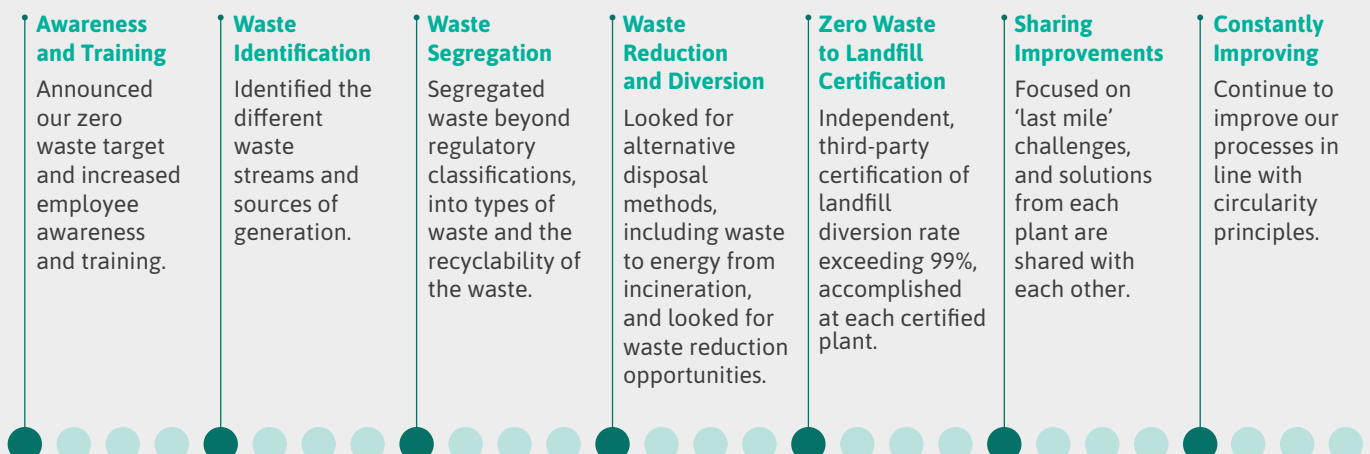
**\*Intertek certification:** Intertek is an independent third party that certified each plant's waste to landfill diversion rate\* exceeding 99%, against Intertek's Zero Waste to Landfill certification criteria.

### 4. What are the "Zero Waste Journey" goals for FY24?

Having achieved our Zero Waste to Landfill target, we will continue to be ambitious with our waste and circularity initiatives and partnerships at each plant to maintain our strong performance. From FY24, we will begin work at our new plants to achieve ZWL certification.

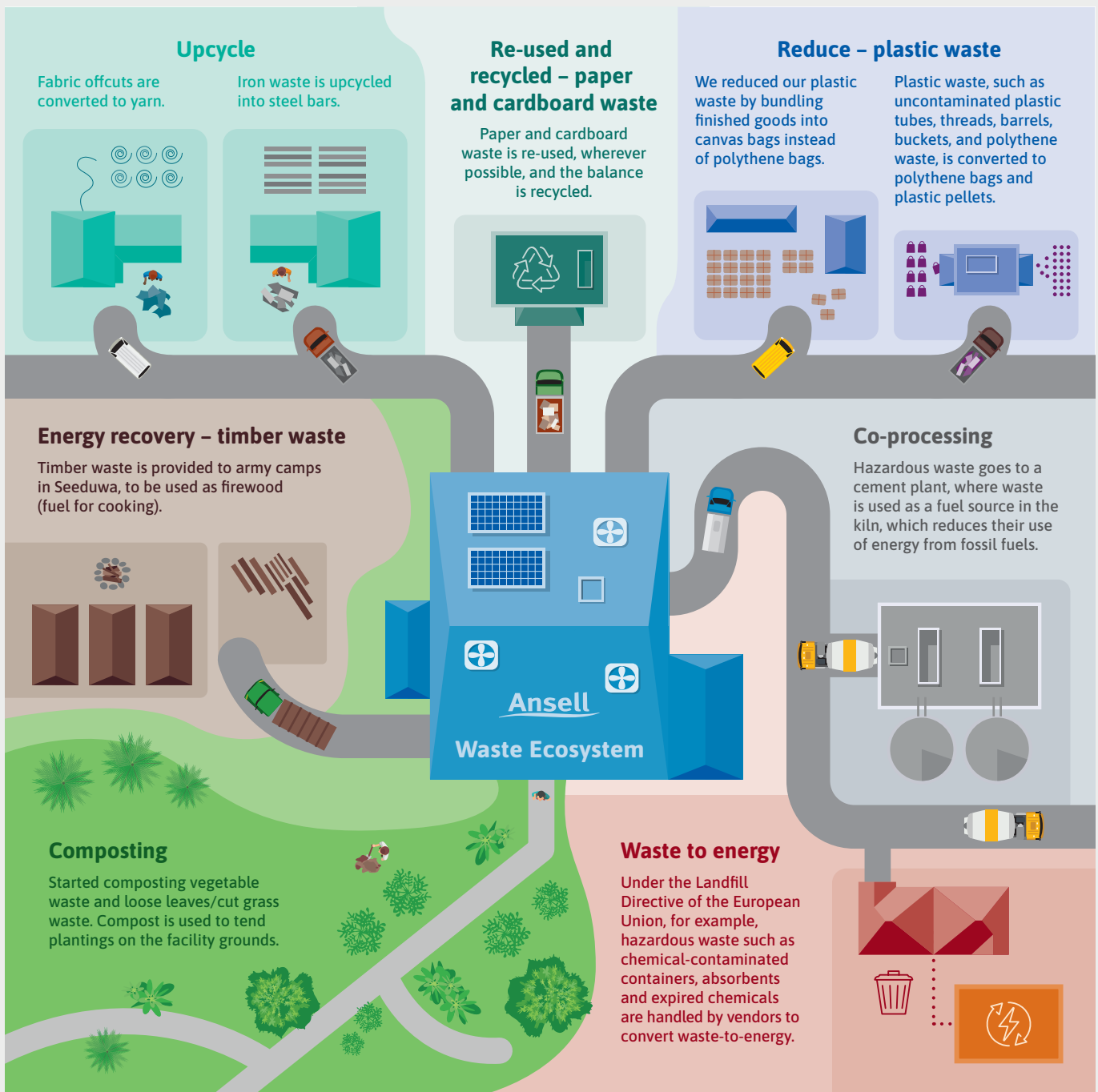
### 5. What are the steps of our "Zero Waste to Landfill Journey"?

The road to achieving this target is unique to each plant:



## 6. What does our current waste ecosystem look like, consolidated across the plants?

Different categories of waste generated and the availability of waste management vendors capable of handling different waste streams required us to segregate our waste in new ways. This resulted in an ecosystem of waste management and waste disposal destinations that is unique to each plant. The diagram below illustrates and consolidates disposal methods from all the plants:



## Protecting people, in every respect.

For over 130 years, Ansell has been protecting people, and our ambitions today are stronger than ever. By setting ourselves ambitious goals on protecting our environment, we seek to break new ground. With increased sustainability and ever smarter, more connected PPE, we strive to ensure the safety of workers and the environment we live in.

**Thinking of people and planet first.**

Learn more at [ansell.com/sustainability](https://ansell.com/sustainability)

Ansell, ® and ™ are trademarks owned by Ansell Limited or one of its affiliates, except as noted. © 2023 Ansell Limited. All Rights Reserved.