

PATIENT RISK & IMPACT

Healthcare associated pressure injuries (HAPIs) affect

2.5M patients each year and result in **60,000** deaths annually.^{1,2}

Total costs of acute care for HAPIs could exceed

\$26.8 Billion³

A single HAPI episode could cost more than

\$70,000.⁴

PRESSURE



MOISTURE



PRESSURE INJURIES



FRICTION



SHEAR

HEALTHCARE WORKER RISK & IMPACT

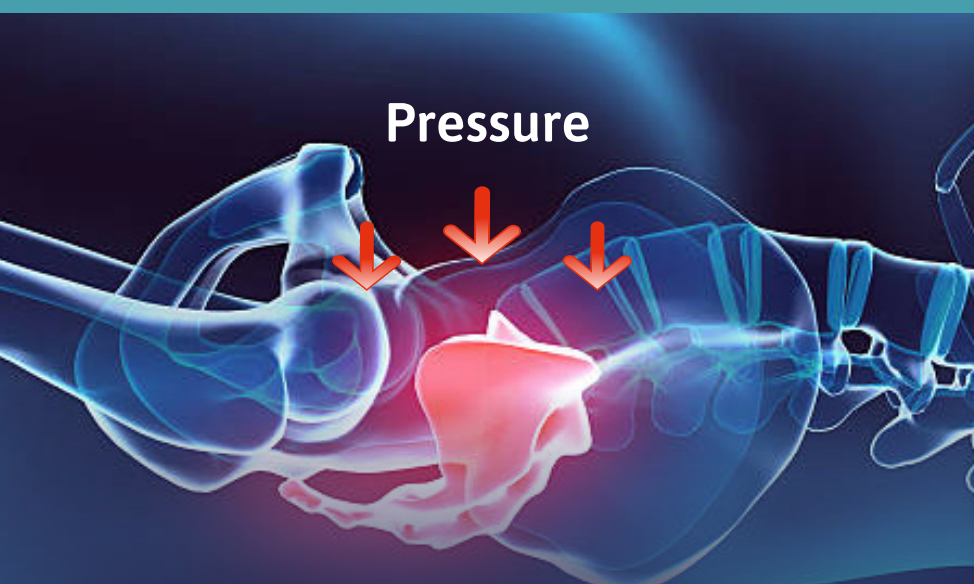
80% of nurses report that they frequently work with musculoskeletal pain⁵

48% of hospital worker injuries that result in lost work days are caused by overexertion and bodily reaction related to patient handling⁶

\$37,000

Average direct cost associated with an occupational back injury of a healthcare provider⁷

The sacrum is one of the most common sites to develop pressure injuries.



To learn more about the Z-TAP™ Patient Repositioning System

Or Ansell's Customer Care Program, please contact us at **866-764-3327** or visit **www.Ansell.com/Z-TAP**

ORDERING INFORMATION

Item #	Item Description
5101	Z-TAP™ Patient Repositioning Sheet
5201	Z-SORB™ Disposable Underpad
5301	Z-WEDGE™ Patient Positioning Wedge

REFERENCES

1. Reddy M, Gill SS, Kalkar SR, Wu W, Anderson PJ, Rochon PA. Treatment of pressure ulcers: a systematic review. JAMA. 2008;300(22):2647-2662
2. Bauer K, Rock K, Nazzari M, Jones O, Qu W. Pressure ulcers in the United States' inpatient population from 2008 to 2012: results of a retrospective nationwide study. Ostomy Wound Manage. 2016;62(11):30-38
3. WV, Delarmente BA. The national cost of hospital acquired pressure injuries in the United States. Int Wound J. 2019;16:634-640. <https://doi.org/10.1111/iwj.13071>. Accessed May 19, 2021.
4. Haesler E. Prevention and Treatment of Pressure Ulcers: Clinical Practice Guideline. Cambridge, UK: Cambridge Media; 2014.
5. American Nurses Association (ANA). 2011 ANA health & safety survey hazards of the RN work environment. <http://nursingworld.org/functionalmenucategories/mediasources/mediabackgrounders/the-nurse-work-environment-2011-healthsafety-survey.pdf>. Accessed May 19, 2021.
6. Occupational Safety and Health Administration (OSHA). Worker safety in your hospital. Know the facts. https://www.osha.gov/dsg/hospitals/documents/1.1_Data_highlights_508.pdf. Accessed May 19, 2021.
7. Ghosh T. Occupational Health and Hazards Among Health Care Workers, International Journal of Occupational Safety and Health, 2013, Vol 3 (1) 1-4.
8. Science Direct. Moisture Vapor Transmission Rate <https://www.sciencedirect.com/topics/engineering/moisture-vapour-transmission-rate>. Accessed May 24, 2021.
9. Data on file. Ansell Healthcare. June 2019.

Ansell, ® and ™ are trademarks owned by Ansell Limited or one of its affiliates. US Patented and US and non-US Patents Pending: www.ansell.com/patentmarking. © 2021 Ansell Limited. All Rights Reserved.

Ansell

Ansell



Z-TAP™ PATIENT REPOSITIONING SYSTEM

Pressure Relief At Every Turn

SANDEL®

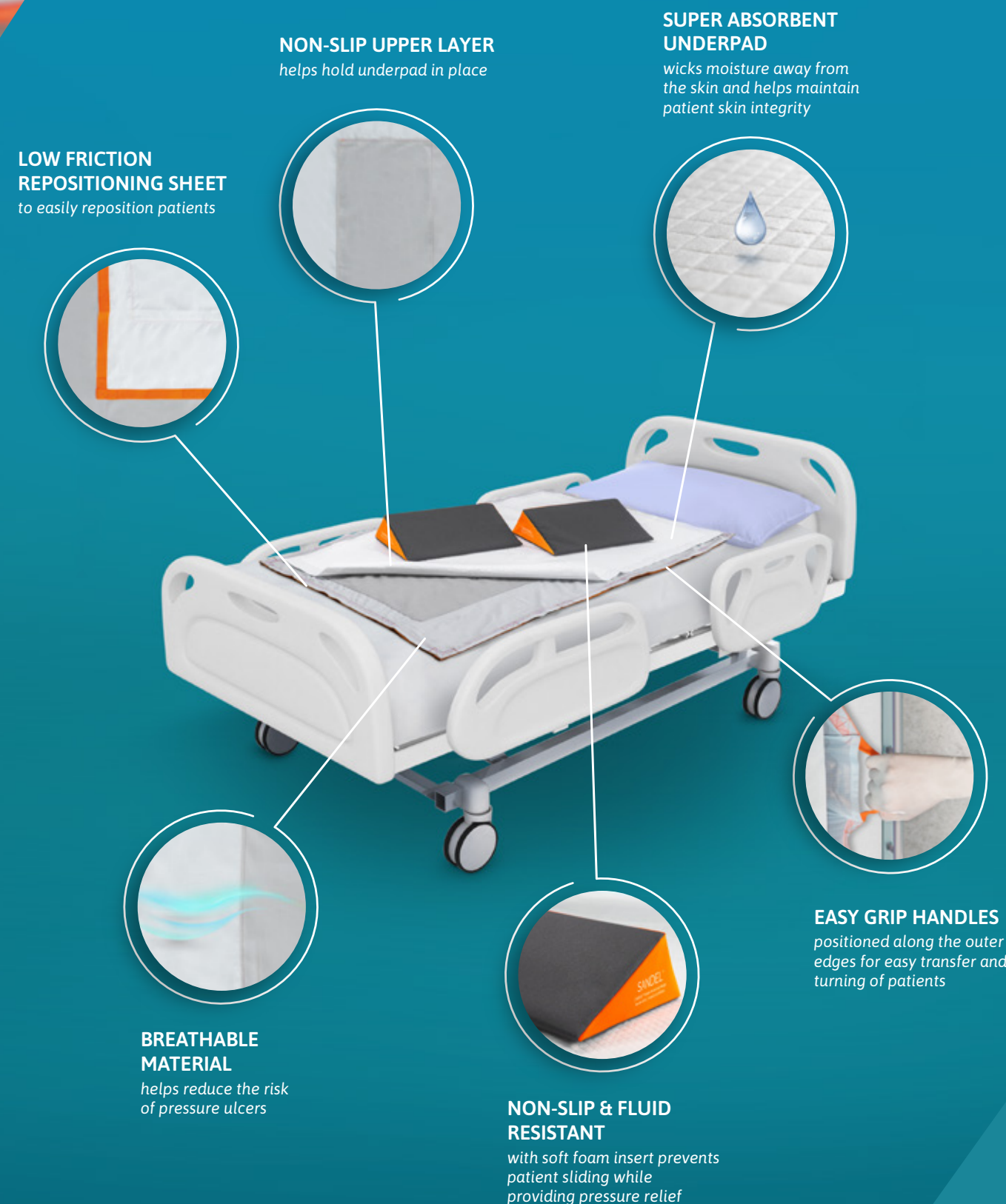


Z-TAP™ PATIENT REPOSITIONING SYSTEM

- Reduces the risk of pressure injuries
- Helps maintain patient skin integrity
- Reduces the risk of injury to healthcare workers
- Minimizes costs associated with injuries to patients and staff



Z-TAP™ PATIENT REPOSITIONING SYSTEM



Z-TAP™ Patient Repositioning Sheet

Patient repositioning sheets are highly breathable and offer a low friction level. The sheet can be left under the patient to allow repositioning, boosting or transfer at any time.

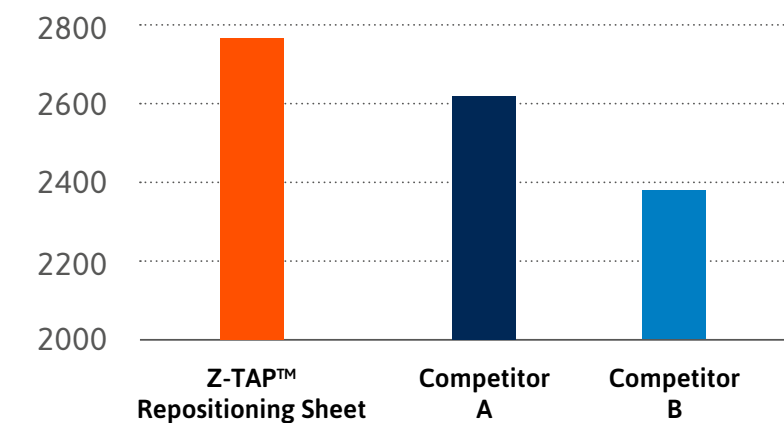
Z-Wedge™ Patient Positioning Wedges

Patient positioning wedges facilitate patient turning to offload pressure from the sacrum, helping to prevent pressure injuries.

Z-SORB™ Disposable Underpad

Disposable underpads absorb and trap fluids to minimize moisture contact with patient skin.

Breathability as measured by Moisture Vapor Transmission Rate⁹



Z-TAP™ Patient Repositioning sheet is **PROVEN more breathable** when compared to other repositioning sheets, helping to maintain **patient skin integrity.**

Moisture Vapor Transmission Rate (MVTR) is an indicator of breathability. MVTR is equal to the amount of water vapor that passes through a material in a 24-hour period. A higher MVTR represents a more breathable material.⁸

Breathability data refers to the repositioning sheet only. Breathability of the underpad is independent from the repositioning sheet. Effectiveness of the underpad is ultimately dependent on absorbency. The Z-SORB underpad has the same or greater absorbency than leading underpads available on the market.