

HyFlex™ 11-939

PRODUCT SUSTAINABILITY FACTSHEET



Manufacturing

Made in a facility:

100%

Running on 100% green electricity¹

From onsite rooftop solar panels and a Green Power Purchase agreement with a local electricity provider



> 99%

Certified by Intertek for diverting >99% of waste from landfill²

With accredited Environmental and Energy Management Systems³

Certified to ISO 14001:2015 and ISO 50001:2018 by SGS



Packaging

Plastic-free⁴

Recyclable⁵

min. 65%

Shipper case includes min. 65% recycled material⁶

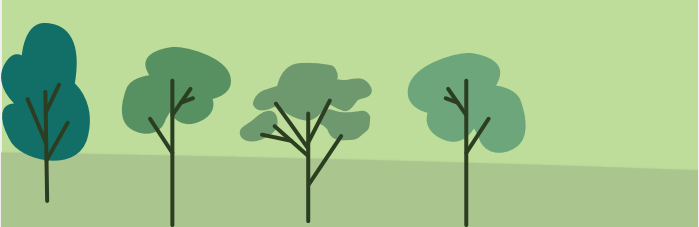


-70%

Primary packaging redesigned to contain 70% less material versus previous packaging⁷

On average, by replacing U-shaped paper insert and polybag with paperband

Packaging made of responsibly sourced raw material⁸



Shipper case sizes optimized for efficient shipping⁹



REFERENCES:¹2024 Sustainability Report, ISO 14064-1:2018 external audit by Control Union; ref period: 7/2023 - 6/2024, ²2023 Ansell, Sustainability Report, ³SGS ISO Certificates, ⁴Ansell, 2023, Product and Packaging Specifications, ⁵Ansell, 2023, Product and Packaging Specifications, ⁶Ansell, 2023, Product and Packaging Specifications, ⁷Ansell, 2023, Sustainable Packaging Program. Ansell Life Cycle Assessment, cradle-to-grave, 2020 (based on baseline cradle-to-grave model using company-specific foreground data foreground data w/ ecoinvent® v3.7 cut-off database background), ReCiPe 2016 Egalitarian LCIA Method). Independent peer review, 2021., ⁸Ansell, 2023, Product and Packaging Specifications, ⁹Ansell, 2023, Sustainable Packaging Program

COPYRIGHT: Ansell, ® and ™ are trademarks owned by Ansell Limited or one of its affiliates. © 2025 Ansell Limited. All Rights Reserved.

WARNING: No glove provides complete protection against cuts, abrasions, punctures or chemicals. Users should test the suitability of Ansell products for a particular purpose, for use within a particular environment or against particular chemicals. See <http://www.ansell.com/en/Legal/Disclaimer.aspx> for additional information.